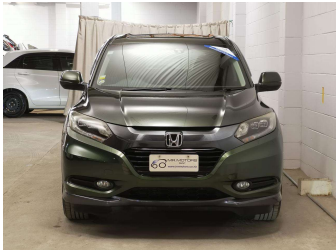


# 2014 Honda Vezel HRV, Hybrid, Camchain, nice n tidy



Purchase Price

\$14,890

Includes GST


Excludes on-road costs of \$695

Indicative repayments

\$92.13 per week\*

Based on a 48 month term & 10% deposit.

Total repayments (208) = \$20,720.83



UDC  
New Zealand's Finance Company

Gain peace of mind with  
Mechanical Breakdown  
Insurance. **Ask us how.**



autosure  
INSURANCE

Top features

» Alloys

» Bluetooth

» Car Stereo

» Climate Control

» Earth Dreams

» Electric Mirrors (Retr...

» Electric Windows

» Keyless Entry ,Star Sm...

» Reversing Camera

» Sports Paddle Shift Ge...

Body Style

5 door, RV-SUV

Odometer

91,444 km

Engine

1500 cc, Hybrid

Fuel Type

Electricity

Transmission

Auto

Wheels

-


VIN

7AT08GDHX25042389

Interior

Black

Safety



5 star  
safety rating

Based on 2025 VSRR rating

Reg No.

-

Ext Colour

Green

History

-

Seats

5 seats, Cloth

CO2 Emissions

★★★★★☆☆  
111 grams/km

Energy Economy

★★★★☆☆☆☆  
Annual fuel cost of \$1,840  
4.7L per 100km

Cost per year is an estimate based on petrol price of \$2.80 per litre and an average distance of 14000 km. Emissions and Energy Economy figures standardised to 3P WLTP.

Stock ID: 47293



MR.MOTORS

Mr Motors Mt Wellington | Phone 09 281 8652 | Email sales@mrmotors.co.nz

1096 Great South Road, Mt Wellington, Auckland 1060, New Zealand

www.mrmotors.co.nz



B

★★★★★

4.52 | 4421 reviews

\* Mr Motors Mt Wellington is not a lender nor a financial adviser. Any amounts displayed should not be seen as an offer of finance or taken as financial advice. The interest rate, fees and loan term used in this calculation may not actually represent those available from lenders. Actual interest rates, fees and loan terms will vary per lender and are typically based on an assessment of your credit risk and responsible lending criteria. Any repayment amounts displayed are indicative only and have been calculated using several other indicative inputs. The interest rate used in this calculation is an arbitrary 12.95%, however exact interest rates vary per lender. The term of the loan used in this calculation is 48 month. Exact terms available vary per lender although options typically include 6, 12, 18, 24, 36, 48 and 60 months. This calculation also includes two typical mandatory fees charged by lenders. These are an account admin fee of \$10.00 per month (other payment frequencies may be available) and a one-off establishment fee of \$495.00. Typically, this fee can be paid upfront or, as in this calculation, be capitalised over the contract term, ie. included in the loan amount. These fees can vary per lender and other non-mandatory fees and charges may also apply. The total amount of repayments has been calculated by multiplying 208 weekly repayments (based on a 48 month term) by the weekly repayment amount of \$92.13 which equals \$20,720.83. This calculator does not consider any of your own personal circumstances and we strongly suggest you seek budgeting advice prior to committing to any loan contract. Responsible lending criteria and lender terms and conditions will likely apply to any finalised loan contract. Proof of security and/or vehicle insurance may also be required before proceeding.

Vehicle data updated 11 December 2025 03:57